

UNIVERSITY INFORMATION

Location.....Philadelphia, PA
Enrollment.....39,500
Majors.....140+
Average Incoming GPA.....3.56
Founded.....1884
President.....Richard M. Englert
Home Arena.....McGonigle Hall
Nickname.....Owls
Colors.....Cherry and White
Website..... www.temple.edu

TEAM INFORMATION

Established.....1926
EIGL team titles.....19
ECAC team titles.....7
NCAA individual titles.....14
NCAA team title.....1 (1949)
NAIGC Champions.....6

The story of a Temple University Gymnast is a tremendous one. Similar to all collegiate athletics, it begins with a team. Up to this point, the majority of a gymnastics career has been about the individual. When a gymnast enters Temple, a transformation begins to take place. As you step into our training facility in the heart of McGonigle Hall, you take a step away from yourself and move forward with a united mentality. Often as young, determined freshman, newcomers have little clue about the journey that they are about to begin, but with a firm work ethic and steadfast faith in development, it is sure to be a spectacular ride. This is how the story starts, it is how it started in 1926, and it is how it starts for the current student athletes that come through our program. As new members are welcomed and graduates move forward to new challenges, the TUMG legacy remains the same. This is Temple University Gymnastics.

ALL TIME COACHES



Harry Nelson
1926-1927



Max Younger
1927-1955



Carl Patterson
1955-1968



Bill Coco
1968-1973



Dave Thor
1973-1976



Fred Turoff
1976-2017



Jesse Kitzen-Abelson
2017-



1800 N. Broad Street
Philadelphia, PA 19122
Pearson Hall, Room 143



facebook.com/Templegymnastics



[@temple_mgym](https://twitter.com/temple_mgym)



[@temple_mgym](https://www.instagram.com/temple_mgym)

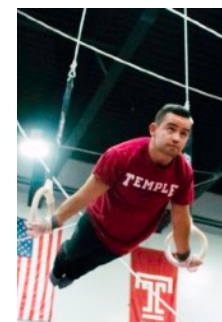
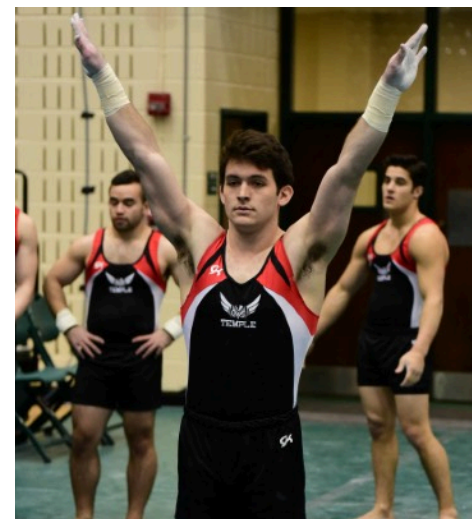


[TempleUniversityMG](https://www.youtube.com/TempleUniversityMG)



templemensgymnastics.com

Temple University Men's Gymnastics



Come fly with the Owls!

About us

Being part of TUMG is a real college gymnastics experience. We have an on-campus facility, two dedicated coaches, athletic trainers, a growing roster, and we compete against varsity teams. Our aim is to develop good citizens while training hard to compete at a high level. TUMG is part of an emerging middle tier of collegiate gymnastics programs that have joined forces to grow the sport by creating the Gymnastics Association of College Teams (GymACT). As we revive and continue our tradition of excellence at Temple, we must raise all of our operating expenses through fundraising and donations. TUMG has been able to rely on its strong alumni base of 300 members and the community in helping us meet our financial goals.

Temple continues to compete on the NCAA circuit against varsity teams in the ECAC: Springfield College, US Military Academy, US Naval Academy, and William & Mary. We also compete against these top NCAA teams:

- Nebraska
- Penn State
- Air Force
- Cal-Berkeley
- Michigan



Temple continues to compete on the NCAA circuit against varsity teams in the ECAC: Springfield College, US Military Academy, US Naval Academy and William & Mary. We also compete against these top NCAA teams:



Philadelphia

Synonymous with America's days as a fledgling bastion of liberty, modern-day Philadelphia is a hub bustling with culture, cuisine, commerce, sports, and history. Located in Southeastern Pennsylvania, the city is home to a population of nearly 1.5 million residents and offers easy access to other major metropolitan areas in the Mid-Atlantic, including New York City, Baltimore, and Washington, D.C.

Downtown Philadelphia, known to locals as Center City, is the region's focal point when it comes to experiencing nightlife, fine dining, and Arts & Entertainment. The world-class Philadelphia Orchestra, historic Walnut Street Theater, and the Philadelphia Museum of Art are only a sample of the excellent arts institutions found in the downtown area. Across the city are a host of culinary delights, ranging from Philly cheesesteaks and other classic street food to fine international and fusion cuisine. The city's history is celebrated to this day, with the Liberty Bell, Independence Hall, and the Betsy Ross House among the most frequently visited sites in Philadelphia. Sports provide a pastime that Philadelphians are known for embracing. The arenas of the Eagles, Phillies, 76ers, and Flyers are all based in South Philadelphia and are easily accessed by the city's Broad Street subway line.



Head Coach



Jesse Kitzen-Abelson

(Temple '11) competed on the men's team from 2008- 2011, qualified to compete in the NCAA Championships and served as co-captain of the team for two years.

Jesse coached in South Africa for five years and was a three-time national coach during his time there. He joined the TUMG coaching staff in 2016 upon his return.

Contact: jkitzenabelson@verizon.net

Assistant Coach



Fred Turoff (Temple '69) is one of the most decorated gymnasts in Temple's history, and is respected across the US and the world of gymnastics. He is still devoted to the team to this day. Not only has

Fred been coaching TUMG for over 40 years now, but he has been a crucial figure in growing men's gymnastics in Greater Philadelphia. Fred enjoys passing along his immense gymnastics knowledge to the members of TUMG.

Contact: fturoff@temple.edu



TUMG is looking for hardworking individuals that want to add value to our program and be part of a motivated team with purpose.

- **Train on quality AAI equipment.**
- **Travel the country to compete and see new sights.**
- **Most of our members compete in their first year!**